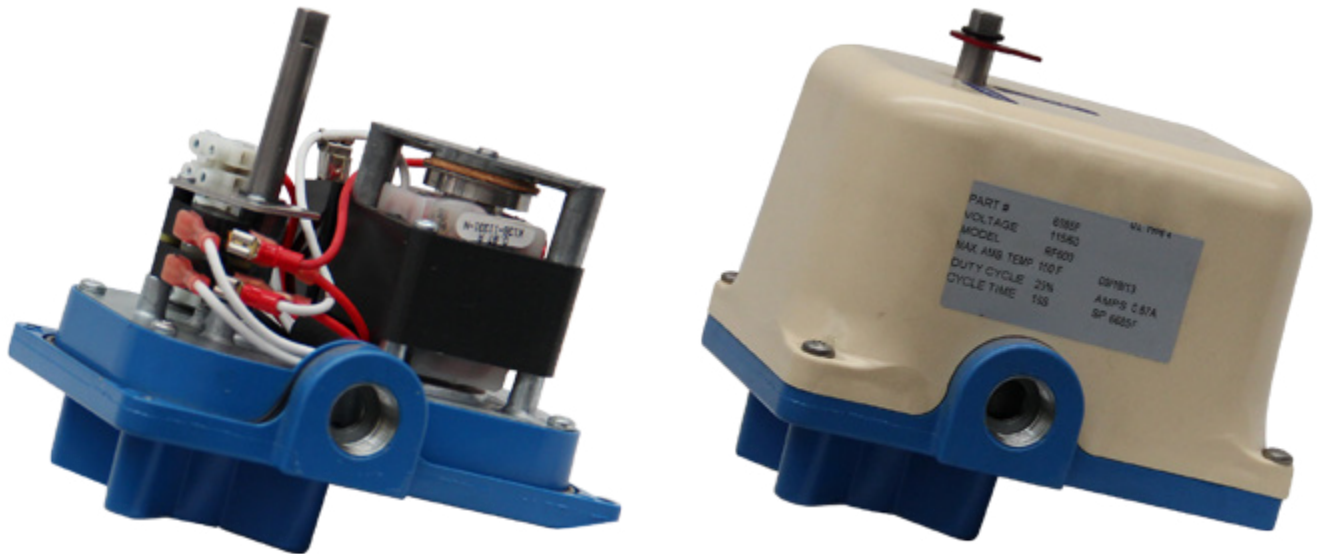


Reversing Electric Actuators

Actuador eléctrico reversible

Model: EA600

Rating: NEMA 4



The Multitech Series II electric actuator provides peak performance for on/off (open/close) valve and damper control. Available at a remarkable low cost and with a high cycle life, the Multitech Series II actuators are a cost-effective and dependable solution to simple valve actuation requirements.

Ideally suited for OEM applications, the ease of installation with no on-going maintenance makes the Multitech Series II actuators ideal for long-term, trouble free actuation.

Consistently Reliable

Powered by a strong split phase reversing AC motor drive, the Series II actuator produces an impressive 100 to 600 inch pounds of torque. (DC motors are also available).

The Multitech series II actuators are, without a doubt, the most cost-effective and efficient units available today. By comparison, Series II actuators prove inherently more reliable for demands of long-term usage over similarly sized pneumatic units.

Engineered by Design

Inside the Multitech Series II, an AC motor sits on a highly accessible platform allowing for ease of access and wiring installation. A convenient terminal strip allows for twelve wiring locations. The efficient, hardened steel spur gear drive train delivers peak performance flow and a long life in all on/off applications.

With the added feature of a declutchable manual override, the Series II can provide positive override ability. An absolute position indicator may be installed on the shaft for easy reading. The full assembly is protected by a NEMA 4, impact proof, PVC composite material that is resistant to damage and ultraviolet radiation. The cover is secured by a standard ISO5211 mounting configuration. Due to the Series II actuator's compact design and direct drive female output, the units are ideally suited for installation in limited space areas.

Guaranteed

Multitech provides a full two-year warranty on all electric actuator mechanical components.

Actuation Solutions

Multitech has developed a series of electric actuators that meet and exceed industry performance standards in the field. Manufactured in the US, the Series I and Series II actuators have established Multitech as the industry leader in electric valve actuators.

Multitech stands ready to partner with your company in supplying cost-effective, high performance electric actuator solutions.

Model	Breakway Torque (In. Lbs.)	Voltage	Duty Cycle	Speed Seconds 1/4 turn (Nominal)		Max Amps At Stall		
						24 VAC	115 VAC	230 VAC
REV	150	24 VAC 115 VAC or 230 VAC	25%	5		2.6	.65	.55
REV	300			9		2.6	.65	.55
REV	600			16		2.6	.65	.55
				to 236		AMPS. AT RATED TORQUE		
				12 VDC	24 VDC	12 VDC	24 VDC	
REV	300	12 VDC or 24 VDC	100%	8.0	8.0	1.3	.5	
REV	600		100%	13.0	13.0	1.3	.5	

6 Lbs.

Specifications

Series II Reversing Electric Actuators

C – 180° center/off.

B – Mechanical brake (required for all butterfly valves).*

S1 or S2 – Additional limit switches.

H – heater and thermostat.

P – position indicator.

Temperature limits (all models) -40° (with heater and thermostat) to 150°F (max.).

Lubrication Permanently lubricated gear train and bearings.

Conduit connection ½ - 14 NPT.

Decutchable override Standard.

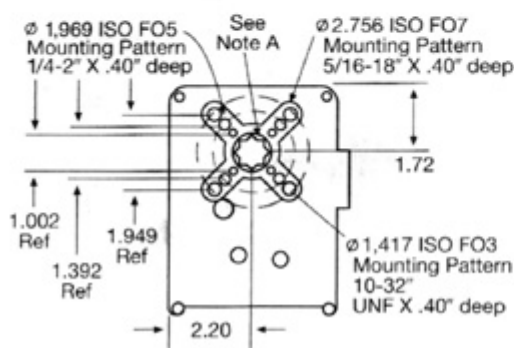
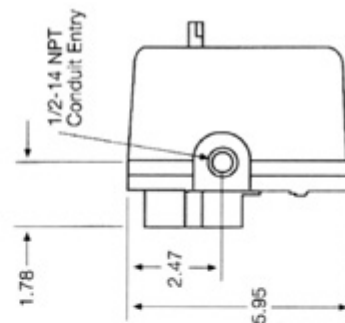
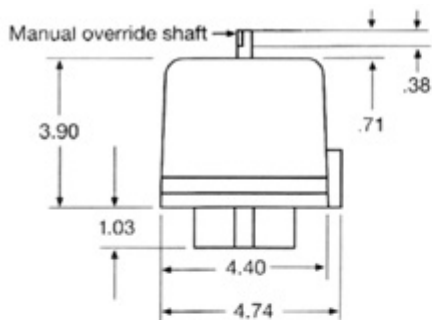
Override Standard, stainless steel.

Cover Composite, PVC.

Base Diecast, zinc alloy.

Enclosure Designed for NEMA 4, 4x.

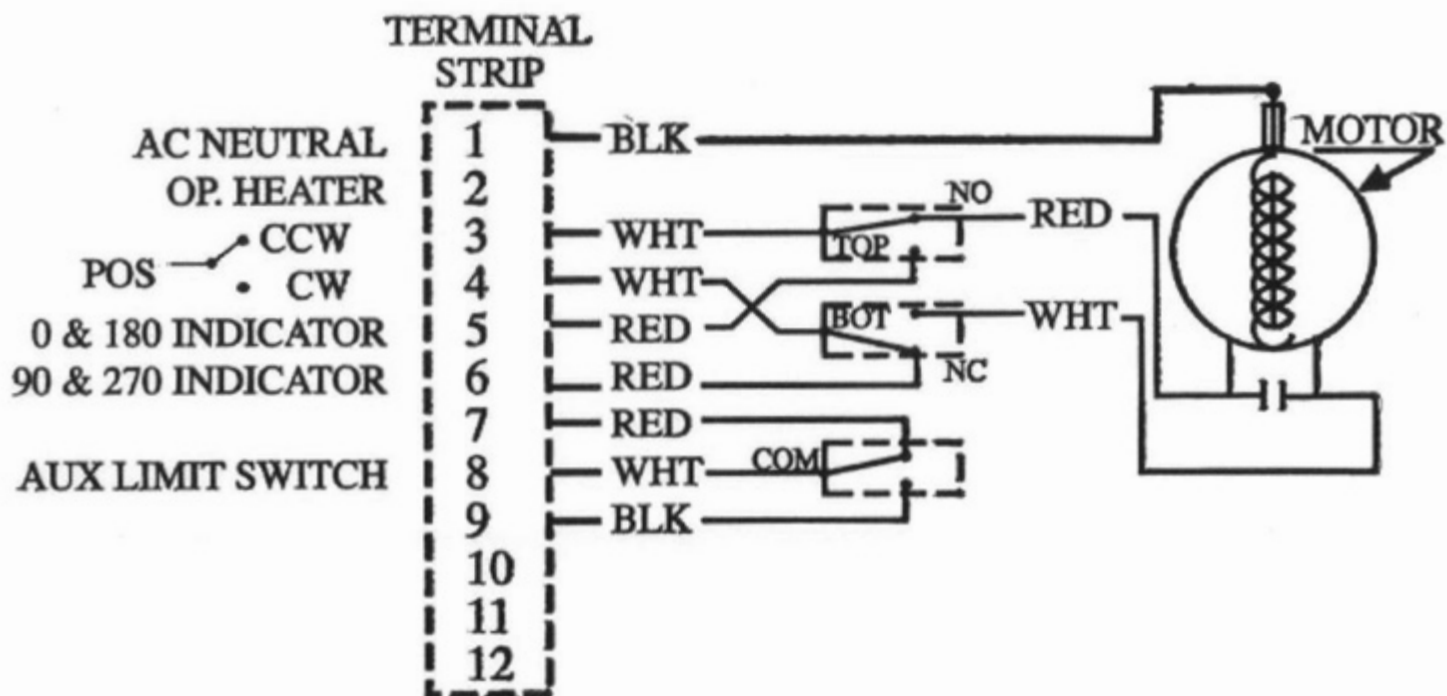
Finish Powder coated epoxy.



Note 14mm (.551") square female x .62 deep output standard. Other configurations including 14mm (.551") square male are also available.



AC REVERSIBLE 300/600 INCH LB.



44-13001